

# HANDLE FOR BUTTERFLY VALVE

## TYPE DVC2955

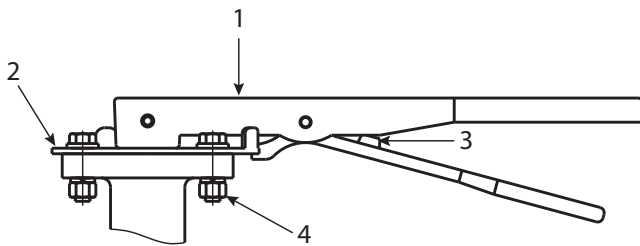


### GENERAL

MATERIAL HANDLE:	CAST IRON ASTM 47
MATERIAL TOP PLATE:	STAINLESS STEEL AISI 304
SURFACE:	BLUE RAL 5015
STEM:	45°

### OPTION

MATERIAL HANDLE:	STAINLESS STEEL AISI 304 / AISI 316
MATERIAL TOP PLATE:	SAME AS HANDLE

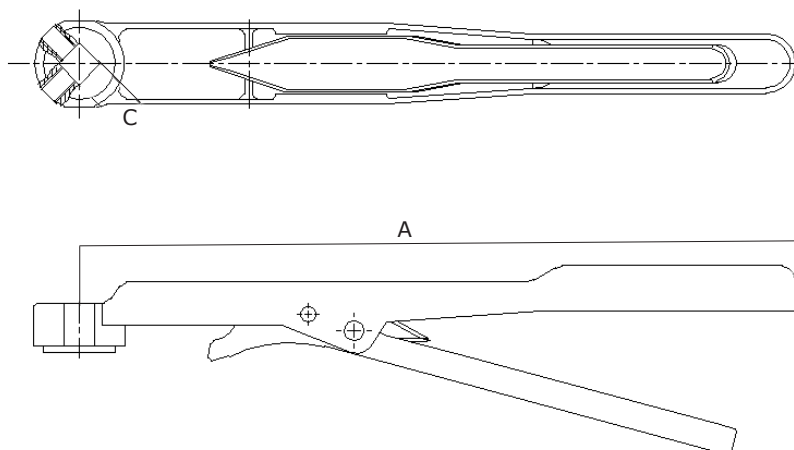


POS	DESCRIPTION	MATERIAL
1	HANDLE	CAST IRON ASTM 47
2	TOP PLATE	STAINLESS STEEL - AISI 304
3	SPRING	SPRING STEEL
4	BOLT/NUT	STAINLESS STEEL - AISI 304

### DESCRIPTION

- **Solid lever** for manual operation of butterfly valve Type DVC6730/6830.
- **The notched top plate** enables fixation of the valve in various positions.
- **Available in stainless steel on request.**
- **Convenient installation and usage.**

## DIMENSIONS



<b>DIM</b>	<b>HANDLE FOR TYPE DVC6730/6830</b>			
[MM]	A [MM]	CXC [MM]	ISO 5211	WEIGHT [KG]
DN32-80	266	11 X 11	F07	0.66
DN100-125	266	14 X 14	F07	0.75
DN150	328	17 X 17	F07	0.81
DN200	386	17 x 17	F10	1.8